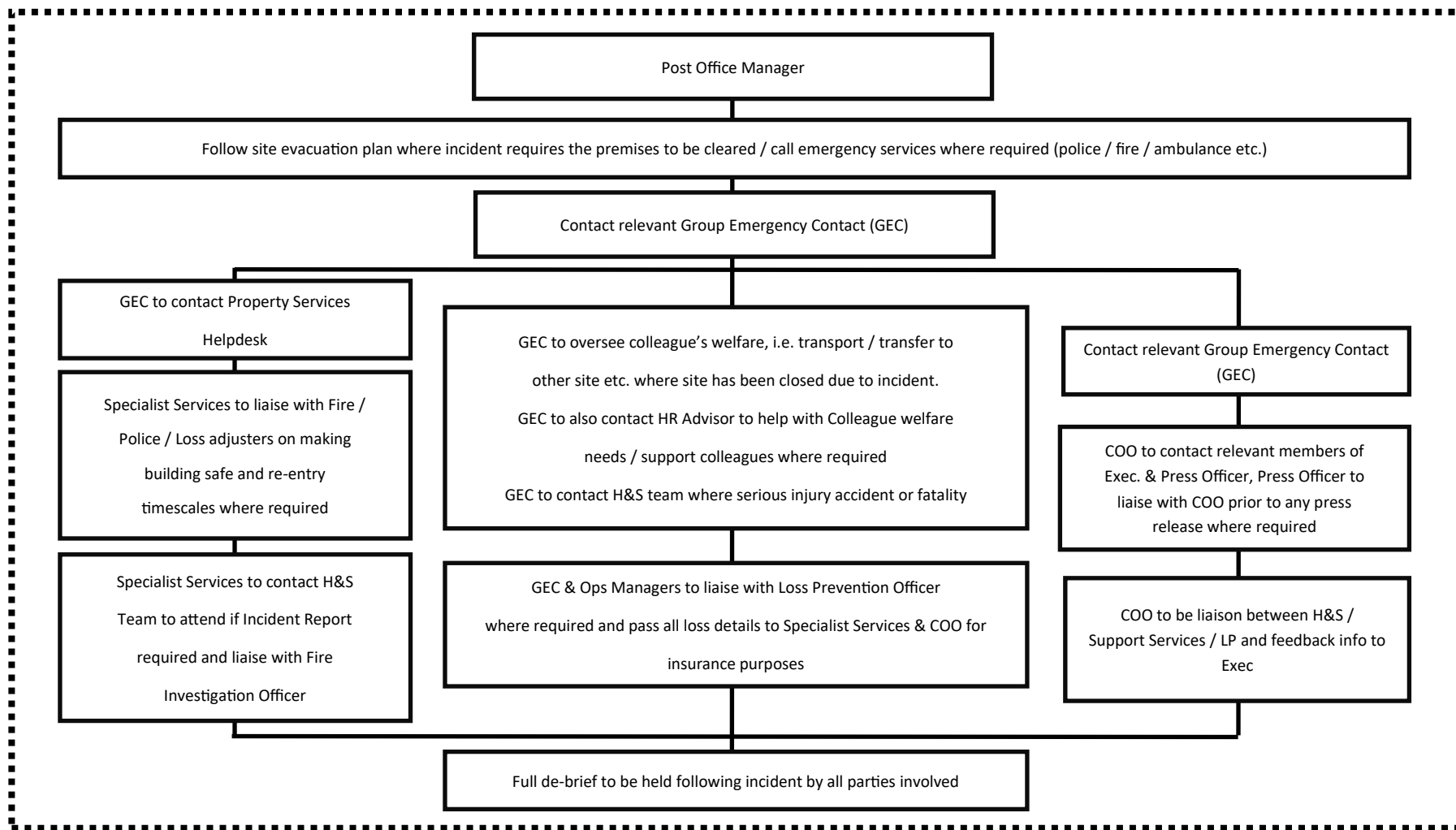


# MAJOR INCIDENT PLAN

The Midcounties Co-operative



(E.G. - Fire and Evacuation, Robbery, Fatality or Serious Injury, Structural Failure or Major Utilities Leakage, Bomb Threat)



Post Office Manager to add appropriate numbers in blank spaces:

Safe Stores Officer (LPO): \_\_\_\_\_ HR Advisor: \_\_\_\_\_ Local Police Station: \_\_\_\_\_

Transco (Gas): 0800 111 999 Water Supplier: \_\_\_\_\_ Health & Safety Team: 07716 224296 / 07805 681 932

Specialist Services Property Helpdesk: 0845 2501265

**GROUP EMERGENCY CONTACT (GEC)** - Initial Contact - PO Support Manager: \_\_\_\_\_

Back up Contact: Head of Post Office Operations: \_\_\_\_\_